

7c

# PROJECT BID INFORMATION

**Applicant** Town of Hertford Meads Lift Station Relocation and Sewer Rehabilitation

**Project Number** VUR-W-ARP-0068 & CS370526-05

**Address** 114 B West Grubb Street  
P.O. Box 32  
Hertford, NC 27944

**Bid Information to be forwarded with the cost summary**

- (a) Tabulations of all bids received (sealed by engineer). *Included*
- (b) Copies of the bid(s) and bid bond the applicant wishes to accept. *Included*
- (c) Resolution of tentative award from the governing board. *Included*
- (d) Engineer's recommendation of award letter. *Included*
- (e) Proof of advertisement. *Included*
- (f) MBE/WBE documents: (see MBE/WBE instructions) *Included*
- (g) American Iron and Steel Certification (not applicable to all projects) *Included*
- (h) If negotiations took place to get the project within budget, all information associated with the negotiations must be submitted. *Included*

**These items, and this form must be submitted to your assigned DWI, Grant Management Unit project manager. Contact Mark Hubbard if you do not know who your project manager is.**

**Addenda**

All addenda must be submitted to your DWI project engineer for approval prior to opening bids. Changes to the scope of the project may result in funding being rescinded.

**Please Note that the following items must be submitted before any reimbursements will be made. All items in the below list are submitted to Pam Whitley of DWI.**

- Capital Project Ordinance
- Site Certificate
- Closing costs
- Executed Construction Contracts (DWI will approve by letter)
- A/E contracts (DWI will approve by letter)
- A/E Brooks Act Compliance Certification (applicable to certain Federal projects)
- Federal ID and DUNS numbers (form was provided with the Loan Offer package)
- LGC must receive the executed promissory note (see guidance document for details on when the promissory note is generated)

**Mailing Address:** Division of Water Infrastructure  
1633 Mail Service Center  
Raleigh, NC 27699-1633

<b>PROJECT COST SUMMARY (as-bid)</b>		
List contractor names below:	<b>TOTAL</b>	<b>ELIGIBLE*</b>
<b>1. Enviro-Tech Unlimited Construction Services (Contract 1)</b>	<b>\$ 2,492,227.00</b>	<b>\$ 2,492,227.00</b>
<b>2. Enviro-Tech Unlimited Construction Services (Contract 2)</b>	<b>\$ 505,176.00</b>	<b>\$ 505,176.00</b>
EQUIPMENT AND MATERIALS	N/A	N/A
<b>SUBTOTAL</b>	<b>\$</b>	<b>\$</b>
CONTINGENCY (2% of construction)	\$ 64,087.00	\$ 64,087.00
ENGINEERING	\$ 685,000.00	\$ 685,000.00
LEGAL, TESTING, ETC.	N/A	
OTHER (specify) ⇨	N/A	
REAL PROPERTY ACQUISITION COSTS**	N/A	
CLOSING COSTS (Not eligible in CWSRF)	\$ 1,465.80	\$ 0
<b>TOTAL</b>	<b>\$ 3,747,955.80</b>	<b>\$ 3,746,490.00</b>

\*Please see eligibility guidance for a full accounting of eligible costs. \*\* Please use the form provided on the website in addition to land cost invoices.

<b>REVENUE SOURCES FOR PROJECT CONSTRUCTION</b>	
List funds that are available for this project	<b>AMOUNT</b>
DWI FUNDING - (CWSRF DWI# CS370526-05 Principal Forgiveness PF)	<b>\$73,290</b>
DWI FUNDING - (ARPA DWI# VUR-W-ARP-0068)	<b>\$3,673,200</b>
TOWN FUNDS (2% CWSRF CLOSING FEE)	<b>\$1,465.80</b>
GENERAL OBLIGATION or REVENUE BONDS	N/A
OTHER AGENCY (specify) ⇨	N/A
OTHER AGENCY (specify) ⇨	N/A
OTHER (specify) ⇨	N/A
OTHER (specify) ⇨	N/A
<b>TOTAL</b>	<b>\$3,747,955.80</b>

The undersigned representative of the Recipient certifies that the information contained above and in any attached statements and material in support thereof is true and correct to the best of his or her knowledge.

\_\_\_\_\_  
Signature of Authorized Representative

Doris Walton (Interim Town Manager)  
Name and Title (type or print)

\_\_\_\_\_  
Date

**Budget: Hertford Collection System Improvements**

DWI Project No. VUR-W-ARP-0068 & CS370526-05

WR Project No. 09220405.01

<b>FUNDING SOURCE</b>	<b>Amount</b>
DEQ Funding (CWSRF DWI# CS370526-05 Principal Forgiveness PF)	\$73,290.00
DEQ Funding (ARPA DWI# VUR-W-ARP-0068)	\$3,673,200.00
<b>TOTAL DEQ FUNDING</b>	<b>\$3,746,490.00</b>
Town Funds (CWSRF 2% loan closing fee)	\$1,465.80
<b>TOTAL FUNDING</b>	<b>\$3,747,955.80</b>
<b>Description</b>	<b>Amount*</b>
Base Bid (Meads Lift Station Relocation and Sewer Rehabilitation) - Contract 1	\$2,779,360.00
Base Bid (WWTP) - Contract 2	\$947,000.00
Contingency (2%)	\$74,527.20
Engineering	\$685,000.00
<b>Total Project Cost</b>	<b>\$4,485,887.20</b>
DWI Funding (CWSRF DWI# CS370526-05 Principal Forgiveness PF)	\$73,290.00
DWI Funding (ARPA DWI# VUR-W-ARP-0068)	\$3,673,200.00
<b>Total Project Budget</b>	<b>\$3,746,490.00</b>
<b>Total Construction Budget</b>	<b>\$3,061,490.00</b>
<i>Construction Budget Surplus</i>	<i>(\$739,397.20)</i>

**Budget: Hertford Collection System Improvements**

DWI Project No. VUR-W-ARP-0068 & CS370526-05

WR Project No. 09220405.01

<b>FUNDING SOURCE</b>	<b>Amount</b>
DEQ Funding (CWSRF DWI# CS370526-05 Principal Forgiveness PF)	\$73,290.00
DEQ Funding (ARPA DWI# VUR-W-ARP-0068)	\$3,673,200.00
<b>TOTAL DEQ FUNDING</b>	<b>\$3,746,490.00</b>
Town Funds (CWSRF 2% loan closing fee)	\$1,465.80
<b>TOTAL FUNDING</b>	<b>\$3,747,955.80</b>
<b>Description</b>	<b>Amount*</b>
Negotiated Base Bid (Meads Lift Station Relocation and Sewer Rehabilitation) - Contract 1	\$2,492,227.00
Negotiated Base Bid (WWTP) - Contract 2	\$505,176.00
Contingency (2%)	\$64,087.00
Engineering	\$685,000.00
<b>Total Project Cost</b>	<b>\$3,746,490.00</b>
DWI Funding (CWSRF DWI# CS370526-05 Principal Forgiveness PF)	\$73,290.00
DWI Funding (ARPA DWI# VUR-W-ARP-0068)	\$3,673,200.00
<b>Total Project Budget</b>	<b>\$3,746,490.00</b>
<b>Total Construction Budget</b>	<b>\$3,061,490.00</b>
<i>Construction Budget Surplus</i>	\$0.00



February 14, 2025

Doris Walton  
Interim Town Manager  
Town of Hertford  
P.O Box 32  
Hertford, North Carolina 27944

RE: Bid Evaluation and Recommendation of Award  
Town of Hertford Collection System Improvements –  
Contract 1 Meads Lift Station Relocation and Sewer Rehabilitation  
WR Project No. 09220405.01  
DWI Project No. VUR-W-ARP-0068 & CS370526-05

Dear Mrs. Walton:

The intent of this letter is to present our evaluation of the bids and make a recommendation for the award. At the first potential bid opening date of Thursday, October 17, 2024, at 2:00 pm, less than three bids were received, so no bids were opened. At the second bid opening on Wednesday December 4, 2024, at 2:00 pm, bid packages were received for the referenced project, opened, and read publicly.

### EVALUATION OF BIDS

During the second round of bidding one (1) bid package was received. The bid package was delivered to the Town of Hertford before the scheduled bid opening. The bid package received was as follows.

Meads Lift Station Replacement and Sewer Rehabilitation				
Bidder	Base Bid	Alternate Bid A	Alternate Bid B	Alternate Bid C
Enviro-Tech Unlimited Construction Services, LLC	\$2,779,360.00	\$1,887,932.00	\$184,154.00	\$133,095.00

Following the bid opening, WithersRavenel further reviewed the bid package in detail for compliance with NC General Statutes and requirements set by the funding agency NCDWI.

Enviro-Tech Unlimited Construction Services, LLC. was the apparent lowest, responsive, and responsible bidder with a Base Bid of \$2,779,360.00 and Alternate Bids of \$1,887,932.00, \$184,154.00, and \$133,095.00 for Alternates A, B, and C respectively.

Individual unit price bid amounts are provided in the attached Certified Bid Tabulation. A review of the bid submittal package for Enviro-Tech Unlimited Construction Services, Inc. revealed that the bid was complete, and the required supporting documentation was provided.

The total NCDWI project budget amount is \$3,747,955.80, as shown below:

<b>FUNDING SOURCE</b>	<b>Amount</b>
DEQ Funding (CWSRF DWI# CS370526-05 Principal Forgiveness PF)	\$73,290.00
DEQ Funding (ARPA DWI# VUR-W-ARP-0068)	\$3,673,200.00
<b>TOTAL DEQ FUNDING</b>	<b>\$3,746,490.00</b>
Town Funds (CWSRF 2% loan closing fee)	\$1,466.00
<b>TOTAL FUNDING</b>	<b>\$3,747,956.00</b>

After subtracting engineering fees and loan fees from the total project budget, \$3,061,490.00 is available for construction and contingency for the Contract 1 (Meads LS and Sewer Rehabilitation) and Contract 2 (WWTP). NCDWI allows for a maximum construction contingency amount of approximately 5%. To maximize construction funds, we recommend utilizing a contingency of approximately 2%.

Due to the cumulative bid prices surpassing the available construction budget, the town is requesting additional ARPA funds from DWI to make the project whole. Concurrently, should additional funds not be available, value engineering negotiations took place between the Town of Hertford, WithersRavenel, and Enviro-Tech Unlimited Construction Services, Inc. The value engineering removed a sizeable amount of sewer rehabilitation work except for those areas which are necessary to retain scoring criteria qualification for funding. In addition, the method of construction and materials around the lift station were negotiated. From this, the project costs and budget are as follows.

<b>Description</b>	<b>Amount*</b>
<b>Negotiated Base Bid (Contract 1- Meads Lift Station Relocation and Sewer Rehabilitation)</b>	<b>\$2,492,227.00</b>
Negotiated Base Bid (Contract 2- WWTP)	\$505,176.00
Contingency (2%)	\$64,087.00
Engineering	\$685,000.00
<b>Total Project Cost</b>	<b>\$3,746,490.00</b>
DWI Funding (CWSRF DWI# CS370526-05 Principal Forgiveness PF)	\$73,290.00
DWI Funding (ARPA DWI# VUR-W-ARP-0068)	\$3,673,200.00
<b>Total Project Budget</b>	<b>\$3,746,490.00</b>
<b>Total Construction Budget (Including Contingency)</b>	<b>\$3,061,490.00</b>
<i>Construction Budget Surplus</i>	<i>\$0.00</i>

*\*Dollar amounts are rounded up to nearest whole dollar*

## RECOMMENDATION

Based on our review of the bids and knowledge of the Contractor, WithersRavenel recommends that the Town of Hertford tentatively award the contract to Enviro-Tech Unlimited Construction Services, Inc. in the amount of the Negotiated Base Bid of \$2,492,227.00, contingent upon the Division of Water Infrastructure's (NCDWI's) approval of the bid package, and the Local Government Commissions (LGC) approval of the CWSRF loan.

If you have any questions or need additional information, please contact me and I will be glad to assist you.

Sincerely,

WithersRavenel

A handwritten signature in black ink, appearing to read "Leonard M. Bryde III". The signature is fluid and cursive, with a small flourish at the end.

Leonard McBryde III, P.E.  
Director of Utilities, Wilmington  
[lmcbryde@withersravenel.com](mailto:lmcbryde@withersravenel.com)  
919.238.0424

Attachments: Certified Bid Tabulation  
Certified Negotiated Bid Tabulation  
Project Budget  
Resolution of Tentative Award  
Scope Reduction and Negotiations Memorandum

**TOWN OF HERTFORD  
COLLECTION SYSTEM IMPROVEMENTS –  
CONTRACT 1- MEADS LIFT STATION RELOCATION AND SEWER REHABILITATION PROJECT  
AMERICAN RESCUE PLAN ACT GRANT (PROJECT # VUR-W-ARP-0068)  
CLEAN WATER STATE REVOLVING FUND LOAN (PROJECT # CS370526-05)**

**RESOLUTION OF TENTATIVE AWARD**

**WHEREAS**, the **Town of Hertford**, North Carolina has received bids, pursuant to duly advertised public notice therefore, for construction of the **Contract 1- Meads Lift Station Relocation and Sewer Rehabilitation** project, a portion of project number **VUR-W-ARP-0068 (ARPA) & CS370526-05 (CWSRF)**, and

**WHEREAS**, **WithersRavenel**, the Town consulting Engineers, have reviewed the bids; and

**WHEREAS**, **Enviro-Tech Unlimited Construction Services, Inc.** was the lowest responsible, responsive bidder for the **Contract 1- Meads Lift Station Relocation and Sewer Rehabilitation** project in the total negotiated bid amount of \$2,492,227.00, and

**WHEREAS**, the consulting Engineers recommend **TENTATIVE AWARD** to the lowest responsible, responsive bidder.

**NOW, THEREFORE, BE IT RESOLVED** that **TENTATIVE AWARD** is made to the lowest responsible, responsive bidder (**Enviro-Tech Unlimited Construction Services, Inc.**) in the Total Negotiated Bid Amount of \$2,492,227.00.

**BE IT FURTHER RESOLVED** that such **TENTATIVE AWARD** be contingent upon the approval of the apparent low bidder by North Carolina Department of Environmental Quality Division of Water Infrastructure.

Upon motion of \_\_\_\_\_, seconded by \_\_\_\_\_, the above **RESOLUTION** was unanimously adopted.

This is \_\_\_\_\_ (date) day of \_\_\_\_\_ (month), 2024 at Town of Hertford, North Carolina.

✓  
\_\_\_\_\_  
R. Ashley Hodges, Mayor

ATTEST:

✓  
\_\_\_\_\_  
Gina Durante, Town Clerk

**TOWN OF HERTFORD  
COLLECTION SYSTEM IMPROVEMENTS –  
CONTRACT 1- MEADS LIFT STATION RELOCATION AND SEWER REHABILITATION PROJECT  
AMERICAN RESCUE PLAN ACT GRANT (PROJECT # VUR-W-ARP-0068)  
CLEAN WATER STATE REVOLVING FUND LOAN (PROJECT # CS370526-05)**

**RESOLUTION OF TENTATIVE AWARD**

**WHEREAS**, the **Town of Hertford**, North Carolina has received bids, pursuant to duly advertised public notice therefore, for construction of the **Contract 1- Meads Lift Station Relocation and Sewer Rehabilitation** project, a portion of project number **VUR-W-ARP-0068 (ARPA) & CS370526-05 (CWSRF)**, and

**WHEREAS**, **WithersRavenel**, the Town consulting Engineers, have reviewed the bids; and

**WHEREAS**, Enviro-Tech Unlimited Construction Services, Inc. was the lowest responsible, responsive bidder for the **Contract 1- Meads Lift Station Relocation and Sewer Rehabilitation** project in the total bid amount of \$2,779,360, and

**WHEREAS**, the consulting Engineers recommend **TENTATIVE AWARD** to the lowest responsible, responsive bidder.

**NOW, THEREFORE, BE IT RESOLVED** that **TENTATIVE AWARD** is made to the lowest responsible, responsive bidder (Enviro-Tech Unlimited Construction Services, Inc.) in the Total Bid Amount of \$2,779,360.

**BE IT FURTHER RESOLVED** that such **TENTATIVE AWARD** be contingent upon the approval of the apparent low bidder by North Carolina Department of Environmental Quality Division of Water Infrastructure.

**BE IT FURTHER RESOLVED** that such **TENTATIVE AWARD** may be contingent upon receipt of additional American Rescue Plan Act (ARPA) funds from NC Division of Water Infrastructure.

Upon motion of \_\_\_\_\_, seconded by \_\_\_\_\_, the above **RESOLUTION** was unanimously adopted.

This is \_\_\_\_\_ (date) day of \_\_\_\_\_ (month), 2024 at Town of Hertford, North Carolina.

✓  
\_\_\_\_\_  
R. Ashley Hodges, Mayor

ATTEST:

✓  
\_\_\_\_\_  
Gina Durante, Town Clerk

## Project Bid Tabulation - Negotiated Bid

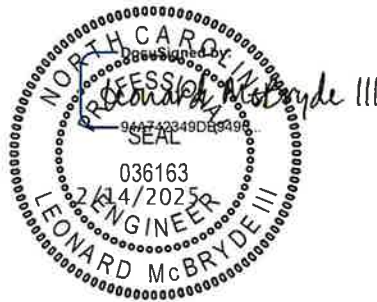
**Town of Hertford Collection System Improvements- Meads Lift Station Replacement and Sewer Rehabilitation**

DWI Project No. VUR-W-ARP-0068 & CS370526-05  
WR Project No. 09220405.01

Bid Received: December 4, 2024				Original Bid: Enviro-Tech Unlimited Construction Services, LLC			Negotiated Bid: Enviro-Tech Unlimited Construction Services, LLC		
Line	Item Description	Quantity	U/M	Unit Cost (\$)	Extended Price (\$)	VE Quantity	Unit Cost (\$)	Extended Price (\$)	
<b>Meads Lift Station Replacement</b>									
1	Mobilization	1	LS	\$85,000	\$85,000	1	\$85,000	\$85,000	
2	Assessment of Existing 8-inch Sewers by CCTV Inspection and Manhole Inspections (low traffic)	0	LF	\$16	\$0	0	\$16	\$0	
3	Assessment of Existing 10-inch Sewers by CCTV Inspection and Manhole Inspections (low traffic)	0	LF	\$20	\$0	0	\$20	\$0	
4	Clearing and Grubbing	1	LS	\$15,000	\$15,000	1	\$15,000	\$15,000	
5	Meads Lift Station Replacement and Demolition	1	LS	\$865,000	\$865,000	1	\$849,980	\$849,980	
6	SCADA Allowance	1	LS	\$25,000	\$25,000	1	\$25,000	\$25,000	
7	10-inch PVC C900 SDR 35 Gravity Sewer (Open-Cut)							\$0	
	10'-12' Depth	45	LF	\$300	\$13,500	45	\$285	\$12,817	
	12'-14' Depth	92	LF	\$350	\$32,200	92	\$335	\$30,804	
8	Bore & Jack- 20-inch steel casing with 10-inch DIP-PG-PVC C900-350 PVC C900 carrier pipe	364	LF	\$1,600	\$582,400	364	\$1,511	\$549,877	
9	10-inch DIP-PG-350 SDR 35 Gravity Sewer (Open Cut)							\$0	
	12'-14' Depth	43	LF	\$465	\$19,995	43	\$362	\$15,557	
10	4-foot Diameter Doghouse Manhole							\$0	
	12'-14' Depth	1	EA	\$18,500	\$18,500	1	\$18,500	\$18,500	
11	4-foot Diameter Manhole							\$0	
	12'-14' Depth	1	EA	\$14,000	\$14,000	1	\$14,000	\$14,000	
	14'-16' Depth	1	EA	\$15,000	\$15,000	1	\$15,000	\$15,000	
12	6-Inch PC-350 DIP Force Main Including Fittings, Valves, and Restrained Joint (Open Cut) (6-8')	49	LF	\$450	\$22,050	49	\$427	\$20,940	
13	6-Inch Force Main Connection, Valves, and Fittings	1	EA	\$17,500	\$17,500	1	\$11,995	\$11,995	
14	Pipe Connection to Existing Manhole	1	EA	\$5,000	\$5,000	1	\$5,000	\$5,000	
15	Remove and Replace Roadway Pavement	90	SY	\$165	\$14,850	90	\$165	\$14,850	
16	Remove & Replace Unsuitable Material with #57 Stone	150	CY	\$125	\$18,750	150	\$125	\$18,750	
17	Erosion Control, Implementation, Maintenance and Removal	1	LS	\$10,000	\$10,000	1	\$10,000	\$10,000	
18	Site Restoration	1	LS	\$29,500	\$29,500	1	\$29,500	\$29,500	
19	Abandon in Place Existing 10" PVC Gravity Sewer and Reconstructed Inverts into Manhole	190	LF	\$60	\$11,400	190	\$60	\$11,400	
20	Bypass Sewer Pumping	1	LS	\$65,000	\$65,000	1	\$57,500	\$57,500	
21	3rd Party Materials Testing Allowance	1	LS	\$5,000	\$5,000	1	\$5,000	\$5,000	
22	Generator	1	LS	\$115,000	\$115,000	1	\$115,000	\$115,000	

Sewer Rehabilitation- Dig and Replace								
23	Assessment of Existing 8-Inch Sewers by CCTV Inspection and Manhole Inspections (low traffic)	0	LF	\$16	\$0	0	\$16	\$0
24	Assessment of Existing 8-Inch Sewers by CCTV Inspection and Manhole Inspections (high traffic)	0	LF	\$20	\$0	0	\$20	\$0
25	Rehabilitate Existing 8-Inch Sewers By Furnishing And Installing Finished Cured-In-Place Pipe Liner (low traffic)	0	LF	\$70	\$0	0	\$70	\$0
26	Rehabilitate Existing 8-Inch Sewers By Furnishing And Installing Finished Cured-In-Place Pipe Liner (high traffic)	0	LF	\$87	\$0	0	\$87	\$0
27	Rehabilitate Existing 10-Inch Sewers By Furnishing And Installing Finished Cured-In-Place Pipe Liner (high traffic)	0	LF	\$87	\$0	0	\$87	\$0
28	8-inch Sanitary Sewer Gravity Line Remove and Replace with DIP (Open Cut) (low traffic)						\$0	\$0
	0-4' Depth	0	LF	\$162	\$0	0	\$162	\$0
	4-6' Depth	0	LF	\$215	\$0	0	\$215	\$0
29	8-inch Sanitary Sewer Gravity Line Remove and Replace with DIP (Open Cut) (high traffic)						\$0	\$0
	0-4' Depth	0	LF	\$192	\$0	0	\$192	\$0
	4-6' Depth	0	LF	\$220	\$0	0	\$220	\$0
30	8-inch Sanitary Sewer Gravity Line Remove and Replace with PVC-C900 SDR 35 (Open Cut) (low traffic)						\$0	\$0
	4-6' Depth	0	LF	\$150	\$0	0	\$150	\$0
	6-8' Depth	90	LF	\$185	\$16,650	90	\$175	\$15,728
	8-10' Depth	488	LF	\$200	\$97,600	488	\$190	\$92,603
31	8-inch Sanitary Sewer Gravity Line Remove and Replace with PVC-C900 SDR 35 (Open Cut) (high traffic)							\$0
	8-10' Depth	50	LF	\$225	\$11,250	50	\$215	\$10,738
32	10-inch Sanitary Sewer Gravity Line Remove and Replace with PVC-C900 (Open Cut) (low traffic)							\$0
	8-10' Depth	0	LF	\$225	\$0	0	\$225	\$0
33	10-inch Sanitary Sewer Gravity Line Remove and Replace with PVC-C900 (Open Cut) (high traffic)							\$0
	8-10' Depth	0	LF	\$255	\$0	0	\$255	\$0
34	Excavate And Backfill For Obstructions And Point Repairs For 8-inch Sewer Line Rehabilitation (low traffic)	1	EA	\$9,500	\$9,500	0	\$9,500	\$0
35	Excavate And Backfill For Obstructions And Point Repairs For 8-inch Sewer Line Rehabilitation (high traffic)	0	EA	\$12,000	\$0	0	\$12,000	\$0
36	Excavate And Backfill For Obstructions And Point Repairs For 10-inch Sewer Line Rehabilitation (low traffic)	2	EA	\$13,500	\$27,000	2	\$13,288	\$26,575
37	Excavate And Backfill For Obstructions And Point Repairs For 10-inch Sewer Line Rehabilitation (high traffic)	1	EA	\$17,500	\$17,500	1	\$17,288	\$17,288
38	Furnish And Install Cementitious Manhole Surface Liner 4-Foot Diameter (low traffic)	57	VF	\$950	\$54,150	16	\$950	\$15,200
39	Furnish And Install Cementitious Manhole Surface Liner 4-Foot Diameter (high traffic)	18	VF	\$1,050	\$18,900	8	\$1,050	\$8,400
40	Rebuild / Repair Bench And Invert Inside Designated Manholes (low or high traffic)	11	EA	\$3,500	\$38,500	1	\$3,500	\$3,500
41	Install or Replace 4-inch Drop in Manhole	0	VF	\$2,500	\$0	0	\$2,500	\$0
42	Install or Replace 6-inch Drop in Manhole	0	VF	\$3,000	\$0	0	\$3,000	\$0
43	Install or Replace 8-inch Drop in Manhole	0	VF	\$3,500	\$0	0	\$3,500	\$0
44	Install Slide or Inside Drop for Drops Less Than 30 Inches	3	EA	\$10,000	\$30,000	1	\$10,000	\$10,000
45	Installation of 4' Diameter Manhole						\$0	\$0
	6-8' Depth	0	EA	\$11,000	\$0	0	\$11,000	\$0
46	Abandon in Place Existing 8" Gravity Sewer and Drops in Manhole	0	LF	\$50	\$0	0	\$50	\$0

47	Inspection of 4-Inch Sewer Lateral To Meet All Specified Requirements (low and high traffic)	10	EA	\$1,500	\$15,000	8	\$1,500	\$12,000
48	Inspection of 6-Inch Sewer Lateral To Meet All Specified Requirements (low and high traffic)	0	EA	\$1,750	\$0	0	\$1,750	\$0
49	Reconnect 4-Inch Sewer Lateral To Main to Meet All Specified Requirements (low traffic)	10	EA	\$4,500	\$45,000	8	\$4,500	\$36,000
50	Reconnect 4-Inch Sewer Lateral To Main to Meet All Specified Requirements (high traffic)	0	EA	\$5,500	\$0	0	\$5,500	\$0
51	Reconnect 6-Inch Sewer Lateral To Main to Meet All Specified Requirements (low traffic)	1	EA	\$6,500	\$6,500	0	\$6,500	\$0
52	Reconnect 6-Inch Sewer Lateral To Main to Meet All Specified Requirements (high traffic)	1	EA	\$9,000.00	\$9,000	0	\$9,000	\$0
53	Rehabilitate or Replace 4-Inch Sewer Lateral To Meet All Specified Requirements (low traffic)	1,050	LF	\$55	\$57,750	280	\$55	\$15,400
54	Rehabilitate or Replace 4-Inch Sewer Lateral To Meet All Specified Requirements (high traffic)	0	LF	\$58	\$0	0	\$58	\$0
55	Rehabilitate or Replace 6-Inch Sewer Lateral To Meet All Specified Requirements (low traffic)	35	LF	\$95	\$3,325	35	\$95	\$3,325
56	Rehabilitate or Replace 6-Inch Sewer Lateral To Meet All Specified Requirements (high traffic)	35	LF	\$105	\$3,675	35	\$105	\$3,675
57	Install 4-inch Sewer Lateral into Manhole	7	EA	\$5,000	\$35,000	7	\$5,000	\$35,000
58	Install 6-inch Sewer Lateral into Manhole	1	EA	\$7,500	\$7,500	0	\$7,500	\$0
59	Install Saddle for 4-inch Sewer Lateral	10	EA	\$2,800	\$28,000	8	\$2,800	\$22,400
60	Install Saddle for 6-inch Sewer Lateral	1	EA	\$3,500	\$3,500	0	\$3,500	\$0
61	Furnish And Install 4-Inch Clean Out	17	EA	\$1,850	\$31,450	15	\$1,850	\$27,750
62	Furnish And Install 6-Inch Clean Out	1	EA	\$3,500	\$3,500	0	\$3,500	\$0
63	Remove and Replace Roadway Pavement for Sewer Line Rehabilitation (low traffic)	834	SY	\$165	\$137,610	818	\$165	\$134,970
64	Remove and Replace Roadway Pavement for Sewer Line Rehabilitation (high traffic)	67	SY	\$350	\$23,450	67	\$350	\$23,450
65	Remove and Replace Concrete Sidewalks and Driveways	0	SY	\$165	\$0	0	\$165	\$0
66	Remove and Replace Concrete Curb & Gutter	0	LF	\$115	\$0	0	\$115	\$0
67	Flowable Fill	20	CY	\$700	\$14,000	20	\$700	\$14,000
68	Trench Stabilization And Pipe Bedding	17	TN	\$110	\$1,870	15	\$110	\$1,650
69	Surface Restoration	189	SY	\$65	\$12,285	167	\$65	\$10,855
70	Remove & Replace Unsuitable Bedding Material with #57 Stone	150	TN	\$135	\$20,250	150	\$135	\$20,250
<b>Total Construction Bid Cost - Base Bid</b>				<b>\$2,779,360.00</b>		<b>\$2,492,227</b>		





# Scope Reduction And Negotiations Memorandum

Date: February 05, 2025

DWI Project No: Town of Hertford Collection System Improvements Project: VUR-W-ARP-0068 & CS370526-05

WR Project No: 09220405.01

Participants: Leonard McBryde (Engineer, WithersRavenel) Michele Faison (Grant Administrator, WithersRavenel) Nick Brown (Contractor, Enviro-Tech) Doug Newhouse (Grant Representative, DWI) Doris Walton (Interim Town Manager)

---

## Background

The Hertford Collection System Improvements project involves two separate design projects.

1. **Meads Lift Station Relocation and Sewer Rehabilitation**
  - a. This project involves relocating the Meads Lift Station, as well as the rehabilitation of sanitary sewer within the town limits.
2. **WWTP**
  - a. This project involves the rehabilitation of, and upgrades to, the Headworks at the Wastewater Treatment Plant

- 
- ▶ 10/17/2024 – 1<sup>st</sup> Bid Opening was held for both projects. The minimum number of required bids to open bids was not met. WithersRavenel and the Town determined that contractor outreach and re-bidding was the best approach to garner more competitive bidders.
  - ▶ 12/4/2024 – 2<sup>nd</sup> Bid Opening was held for both projects. The lowest responsive responsible bidder (for both projects) was Enviro-Tech Unlimited Construction Services, LLC. However, low bid prices came in over budget. WithersRavenel engineering was deemed necessary to award the project.
    - Meads LS Relocation and Sewer Rehab – Base Bid of \$2,779,360
    - WWTP – Base Bid of \$947,000
    - Total Construction Budget = \$3,061,490
  - ▶ 1/8/2025 – WR met virtually with Enviro-Tech Unlimited Construction Services, LLC to discuss the need for Value Engineering. WR was to prepare documents for a follow up discussion with the Value Engineered Scope
  - ▶ 1/14/2025 – WR met virtually with Enviro-Tech Unlimited Construction Services, LLC to propose a value engineered scope.

## Negotiation and Value WithersRavenel Engineering Process – Meads Lift Station Relocation and Sewer Rehabilitation

- ▶ 12/11/2024 – Engineer met with Grant Administrator to determine areas qualified for scope reduction in order to retain the areas which qualify the project for funding.
- ▶ 1/13/2025 – Engineer Verified ARPA and CWSRF construction budget with Grant Administrator.
- ▶ 1/14/2025 – Engineer finalized the Value Engineering Proposal and met with the Contractor to discuss proposal.
  - The proposed value engineering scope includes all proposed work associated with relocating the Meads Lift Station.

219 Station Road, Suite 101 | Wilmington, NC 28405

t: 910.256.9277 | www.withersravenel.com | License No. F-1479

Asheville | Cary | Charlotte | Greensboro | Pittsboro | Powells Point | Raleigh | Southern Pines | Wilmington



- The proposed scope retained the sanitary sewer linework proposed in the base scope; dictating that the proposed linework be completed for Whedbee Dr. and N Covent Garden St.
  - Engineer and Grant Administrator determined the aforementioned streets could not be removed in order to maintain the points which qualified the project for CWSRF funding.
  - This determination retains all of the linework in the base bid aside from a noted point repair of a third party gas line bored through a sewer main. Engineer recommended to the Town that that the Town hold the third party responsible for correcting this bore intrusion, using zero dollars of funding to make the repair. This line was kept base scope as a backup, should the Town be unable to hold the third party responsible to correct the intrusion.
  - Engineer removed all alternate linework.
  - The proposed value engineering scope retained the manhole rehabilitation associated with Whedbee Dr. and N Covent Garden St. as part of the base bid. The remaining manhole rehabilitation in the base bid was removed from the project, along with the alternates.
  - Furthermore, an additional \$61,000 needed to be shaved off of the bid proposal in order to allow the budget approximately 2% contingency. The Engineer asked the contractor to discern ways to bring this price down by substituting materials and methods as best they could.
- ▶ 1/20/2025 - The Contractor accepted this this value engineering proposal, and began work to find ways to bring the Meads Lift Station work down by approximately \$61,000.
  - ▶ 1/20/2025 – The Contractor proposed the following changes to make the forementioned reduction.

**Enviro-Tech**

**Potential Deducts**

Item #	Deduct Description	Unit	QTY	Deduct Unit	Deduct Total
5	Remove water service, water tap, yard hydrant, backflow	LS	-1	\$ 8,500.00	\$ (8,500.00)
5	Remove interior lining from lift station	VF	-21	\$ 500.00	\$ (10,500.00)
5	Remove exterior coating from lift station	VF	-21	\$ 200.00	\$ (4,200.00)
5	Remove barb wire from fence	LF	-260	\$ 2.00	\$ (520.00)
5	Cut and plug end of sewer forcemain; no flowable fill	LF	-164	\$ 25.00	\$ (4,100.00)
7a	10" SDR 26 in lieu of C900 10'-12' depth	LF	-45	\$ 10.50	\$ (472.50)
7a	10" SDR 35 in lieu of C900 10'-12' depth	LF	-45	\$ 15.17	\$ (682.65)
7b	10" SDR 26 in lieu of C900 12'-14' depth	LF	-92	\$ 10.50	\$ (966.00)
7b	10" SDR 35 in lieu of C900 12'-14' depth	LF	-92	\$ 15.17	\$ (1,395.64)
8	10" carrier pipe to be PVC C900 pipe without bell restraints (jack and bore)	LF	-364	\$ 88.05	\$ (32,050.20)
9	10" PVC C900 gravity sewer in lieu of ductile iron	LF	-43	\$ 88.05	\$ (3,786.15)
19	Cut and plug ends of 10" gravity sewer pipe; no flowable	LF	-190	\$ 30.00	\$ (5,700.00)
30a	Use 8" SDR 26 in lieu of C900	LF	-90	\$ 7.25	\$ (652.50)
30a	Use 8" SDR 35 in lieu of C901	LF	-90	\$ 10.24	\$ (921.60)
30b	Use 8" SDR 26 in lieu of C902	LF	-488	\$ 7.25	\$ (3,538.00)
30b	Use 8" SDR 35 in lieu of C903	LF	-488	\$ 10.24	\$ (4,997.12)
31a	Use 8" SDR 26 in lieu of C904	LF	-50	\$ 7.25	\$ (362.50)
31a	Use 8" SDR 35 in lieu of C905	LF	-50	\$ 10.24	\$ (512.00)
36	10" point repair using SDR 26 in lieu of C900 low traffic	EA	-2	\$ 147.00	\$ (294.00)
36	10" point repair using SDR 35 in lieu of C900 low traffic	EA	-2	\$ 212.38	\$ (424.76)
37	10" point repair using SDR 26 in lieu of C900 low traffic	EA	-1	\$ 147.00	\$ (147.00)
37	10" point repair using SDR 35 in lieu of C900 low traffic	EA	-1	\$ 212.38	\$ (212.38)

Engineer began reviewing the Contractors proposal.



- ▶ 1/23/2025 - Contractor and Engineer met to discuss these deductions. Engineer accepted substitutions shown by stated the table below:
  - Green highlight = accepted
  - No highlight = not accepted
  - Orange highlight = under further review & negotiation

**Potential Deducts**

Item #	Deduct Description	Unit	QTY	Deduct Unit	Deduct Total		ID No.
5	Remove water service, water tap, yard hydrant, backflow	LS	-1	\$ 8,500.00	\$ (8,500.00)	\$ (8,500.00)	1
5	Remove interior lining from lift station	VF	-21	\$ 500.00	\$ (10,500.00)		2
5	Remove exterior coating from lift station	VF	-21	\$ 200.00	\$ (4,200.00)		3
5	Remove barb wire from fence	LF	-260	\$ 2.00	\$ (520.00)	\$ (520.00)	4
5	Cut and plug end of sewer for main; no flowable fill	LF	-164	\$ 25.00	\$ (4,100.00)		5
7a	10" SDR 26 in lieu of C900 10'-12' depth	LF	-45	\$ 10.50	\$ (472.50)		6
7a	10" SDR 35 in lieu of C900 10'-12' depth	LF	-45	\$ 15.17	\$ (682.65)	\$ (682.65)	7
7b	10" SDR 26 in lieu of C900 12'-14' depth	LF	-92	\$ 10.50	\$ (966.00)		8
7b	10" SDR 35 in lieu of C900 12'-14' depth	LF	-92	\$ 15.17	\$ (1,395.64)	\$ (1,395.64)	9
8	10" carrier pipe to be PVC C900 pipe without bell restrains (jack and bore)	LF	-364	\$ 88.05	\$ (32,050.20)	\$ (32,050.20)	10
9	10" PVC C900 gravity sewer in lieu of ductile iron	LF	-43	\$ 88.05	\$ (3,786.15)	\$ (3,786.15)	11
19	Cut and plug ends of 10" gravity sewer pipe; no flowable	LF	-190	\$ 30.00	\$ (5,700.00)		12
30a	Use 8" SDR 26 in lieu of C900	LF	-90	\$ 7.25	\$ (652.50)		13
30a	Use 8" SDR 35 in lieu of C901	LF	-90	\$ 10.24	\$ (921.60)	\$ (921.60)	14
30b	Use 8" SDR 26 in lieu of C902	LF	-488	\$ 7.25	\$ (3,538.00)		15
30b	Use 8" SDR 35 in lieu of C903	LF	-488	\$ 10.24	\$ (4,997.12)	\$ (4,997.12)	16
31a	Use 8" SDR 26 in lieu of C904	LF	-50	\$ 7.25	\$ (362.50)		17
31a	Use 8" SDR 35 in lieu of C905	LF	-50	\$ 10.24	\$ (512.00)	\$ (512.00)	18
36	10" point repair using SDR 26 in lieu of C900 low traffic	EA	-2	\$ 147.00	\$ (294.00)		19
36	10" point repair using SDR 35 in lieu of C900 low traffic	EA	-2	\$ 212.38	\$ (424.76)	\$ (424.76)	20
37	10" point repair using SDR 26 in lieu of C900 low traffic	EA	-1	\$ 147.00	\$ (147.00)		21
37	10" point repair using SDR 35 in lieu of C900 low traffic	EA	-1	\$ 212.38	\$ (212.38)	\$ (212.38)	22
11	force main tie in using PVC C900 instead of Ductile Iron	LF	-49		\$ -	\$ -	
						\$ (54,002.50)	

The accepted reductions totaled approximately \$54,000. Engineer and Contractor further discussed two proposed reductions and one new reduction in attempt to reach the \$61,000 goal.

- ▶ 1/29/2025 - Contractor proposed the following changes:
  - Green highlight = accepted
  - Grey = no change from previous proposal; Engineer's decision stands
  - Orange highlight = under further review & negotiation





**WithersRavenel**  
Our People. Your Success.

## Project Bid Tabulation - Base Bid

### Town of Hertford Collection System Improvements- Meads Lift Station Replacement and Sewer Rehabilitation

DWI Project No. VUR-W-ARP-0068 & CS370526-05

WR Project No. 09220405.01

Bid Received: December 4, 2024

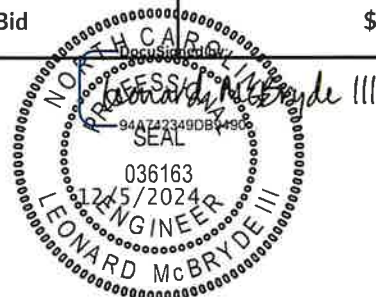
Enviro-Tech Unlimited Construction Services, LLC

Line	Item Description	Quantity	U/M	Unit Cost (\$)	Extended Price (\$)
<b>Meads Lift Station Replacement</b>					
1	Mobilization	1	LS	\$85,000	\$85,000
2	Assessment of Existing 8-Inch Sewers by CCTV Inspection and Manhole Inspections (low traffic)	0	LF	\$16	\$0
3	Assessment of Existing 10-Inch Sewers by CCTV Inspection and Manhole Inspections (low traffic)	0	LF	\$20	\$0
4	Clearing and Grubbing	1	LS	\$15,000	\$15,000
5	Meads Lift Station Replacement and Demolition	1	LS	\$865,000	\$865,000
6	SCADA Allowance	1	LS	\$25,000	\$25,000
7	10-inch PVC C900 Gravity Sewer (Open-Cut)				
	10'-12' Depth	45	LF	\$300	\$13,500
	12'-14' Depth	92	LF	\$350	\$32,200
8	Bore & Jack- 20-inch steel casing with 10-inch DIP PC 350 carrier pipe	364	LF	\$1,600	\$582,400
9	10-inch DIP PC-350 Gravity Sewer (Open Cut)				
	12-14' Depth	43	LF	\$465	\$19,995
10	4-foot Diameter Doghouse Manhole				
	12'-14' Depth	1	EA	\$18,500	\$18,500
11	4-foot Diameter Manhole				
	12'-14' Depth	1	EA	\$14,000	\$14,000
	14'-16' Depth	1	EA	\$15,000	\$15,000
12	6-Inch PC-350 DIP Force Main Including Fittings, Valves, and Restrained Joint (Open Cut) (6'-8')	49	LF	\$450	\$22,050

13	6-Inch Force Main Connection, Valves, and Fittings	1	EA	\$17,500	\$17,500
14	Pipe Connection to Existing Manhole	1	EA	\$5,000	\$5,000
15	Remove and Replace Roadway Pavement	90	SY	\$165	\$14,850
16	Remove & Replace Unsuitable Material with #57 Stone	150	CY	\$125	\$18,750
17	Erosion Control, Implementation, Maintenance and Removal	1	LS	\$10,000	\$10,000
18	Site Restoration	1	LS	\$29,500	\$29,500
19	Abandon in Place Existing 10" PVC Gravity Sewer and Reconstructed inverts into Manhole	190	LF	\$60	\$11,400
20	Bypass Sewer Pumping	1	LS	\$65,000	\$65,000
21	3rd Party Materials Testing Allowance	1	LS	\$5,000	\$5,000
22	Generator	1	LS	\$115,000	\$115,000
<b>Sewer Rehabilitation- Dig and Replace</b>					
23	Assessment of Existing 8-Inch Sewers by CCTV Inspection and Manhole Inspections (low traffic)	0	LF	\$16	\$0
24	Assessment of Existing 8-Inch Sewers by CCTV Inspection and Manhole Inspections (high traffic)	0	LF	\$20	\$0
25	Rehabilitate Existing 8-Inch Sewers By Furnishing And Installing Finished Cured-in-Place Pipe Liner (low traffic)	0	LF	\$70	\$0
26	Rehabilitate Existing 8-Inch Sewers By Furnishing And Installing Finished Cured-in-Place Pipe Liner (high traffic)	0	LF	\$87	\$0
27	Rehabilitate Existing 10-Inch Sewers By Furnishing And Installing Finished Cured-in-Place Pipe Liner (high traffic)	0	LF	\$87	\$0
28	8-inch Sanitary Sewer Gravity Line Remove and Replace with DIP (Open Cut) (low traffic)				
	0-4' Depth	0	LF	\$162	\$0
	4-6' Depth	0	LF	\$215	\$0
29	8-inch Sanitary Sewer Gravity Line Remove and Replace with DIP (Open Cut) (high traffic)				
	0-4' Depth	0	LF	\$192	\$0
	4-6' Depth	0	LF	\$220	\$0
30	8-inch Sanitary Sewer Gravity Line Remove and Replace with PVC C900 (Open Cut) (low traffic)				
	4-6' Depth	0	LF	\$150	\$0

	6-8' Depth	90	LF	\$185	\$16,650
	8-10' Depth	488	LF	\$200	\$97,600
31	8-inch Sanitary Sewer Gravity Line Remove and Replace with PVC C900 (Open Cut) (high traffic)				
	8-10' Depth	50	LF	\$225	\$11,250
32	10-inch Sanitary Sewer Gravity Line Remove and Replace with PVC C900 (Open Cut) (low traffic)				
	8-10' Depth	0	LF	\$225	\$0
33	10-inch Sanitary Sewer Gravity Line Remove and Replace with PVC C900 (Open Cut) (high traffic)				
	8-10' Depth	0	LF	\$255	\$0
34	Excavate And Backfill For Obstructions And Point Repairs For 8-inch Sewer Line Rehabilitation (low traffic)	1	EA	\$9,500	\$9,500
35	Excavate And Backfill For Obstructions And Point Repairs For 8-inch Sewer Line Rehabilitation (high traffic)	0	EA	\$12,000	\$0
36	Excavate And Backfill For Obstructions And Point Repairs For 10-inch Sewer Line Rehabilitation (low traffic)	2	EA	\$13,500	\$27,000
37	Excavate And Backfill For Obstructions And Point Repairs For 10-inch Sewer Line Rehabilitation (high traffic)	1	EA	\$17,500	\$17,500
38	Furnish And Install Cementitious Manhole Surface Liner 4-Foot Diameter (low traffic)	57	VF	\$950	\$54,150
39	Furnish And Install Cementitious Manhole Surface Liner 4-Foot Diameter (high traffic)	18	VF	\$1,050	\$18,900
40	Rebuild / Repair Bench And Invert Inside Designated Manholes (low or high traffic)	11	EA	\$3,500	\$38,500
41	Install or Replace 4-inch Drop in Manhole	0	VF	\$2,500	\$0
42	Install or Replace 6-inch Drop in Manhole	0	VF	\$3,000	\$0
43	Install or Replace 8-inch Drop in Manhole	0	VF	\$3,500	\$0
44	Install Slide or Inside Drop for Drops Less Than 30 Inches	3	EA	\$10,000	\$30,000
45	Installation of 4' Diameter Manhole				
	6-8' Depth	0	EA	\$11,000	\$0
46	Abandon in Place Existing 8" Gravity Sewer and Drops in Manhole	0	LF	\$50	\$0
47	Inspection of 4-Inch Sewer Lateral To Meet All Specified Requirements (low and high traffic)	10	EA	\$1,500	\$15,000
48	Inspection of 6-Inch Sewer Lateral To Meet All Specified Requirements (low and high traffic)	0	EA	\$1,750	\$0

49	Reconnect 4-Inch Sewer Lateral To Main to Meet All Specified Requirements (low traffic)	10	EA	\$4,500	\$45,000
50	Reconnect 4-Inch Sewer Lateral To Main to Meet All Specified Requirements (high traffic)	0	EA	\$5,500	\$0
51	Reconnect 6-Inch Sewer Lateral To Main to Meet All Specified Requirements (low traffic)	1	EA	\$6,500	\$6,500
52	Reconnect 6-Inch Sewer Lateral To Main to Meet All Specified Requirements (high traffic)	1	EA	\$9,000.00	\$9,000
53	Rehabilitate or Replace 4-Inch Sewer Lateral To Meet All Specified Requirements (low traffic)	1,050	LF	\$55	\$57,750
54	Rehabilitate or Replace 4-Inch Sewer Lateral To Meet All Specified Requirements (high traffic)	0	LF	\$58	\$0
55	Rehabilitate or Replace 6-Inch Sewer Lateral To Meet All Specified Requirements (low traffic)	35	LF	\$95	\$3,325
56	Rehabilitate or Replace 6-Inch Sewer Lateral To Meet All Specified Requirements (high traffic)	35	LF	\$105	\$3,675
57	Install 4-inch Sewer Lateral into Manhole	7	EA	\$5,000	\$35,000
58	Install 6-inch Sewer Lateral into Manhole	1	EA	\$7,500	\$7,500
59	Install Saddle for 4-inch Sewer Lateral	10	EA	\$2,800	\$28,000
60	Install Saddle for 6-inch Sewer Lateral	1	EA	\$3,500	\$3,500
61	Furnish And Install 4-Inch Clean Out	17	EA	\$1,850	\$31,450
62	Furnish And Install 6-Inch Clean Out	1	EA	\$3,500	\$3,500
63	Remove and Replace Roadway Pavement for Sewer Line Rehabilitation (low traffic)	834	SY	\$165	\$137,610
64	Remove and Replace Roadway Pavement for Sewer Line Rehabilitation (high traffic)	67	SY	\$350	\$23,450
65	Remove and Replace Concrete Sidewalks and Driveways	0	SY	\$165	\$0
66	Remove and Replace Concrete Curb & Gutter	0	LF	\$115	\$0
67	Flowable Fill	20	CY	\$700	\$14,000
68	Trench Stabilization And Pipe Bedding	17	TN	\$110	\$1,870
69	Surface Restoration	189	SY	\$65	\$12,285
70	Remove & Replace Unsuitable Bedding Material with #57 Stone	150	TN	\$135	\$20,250
<b>Total Construction Bid Cost - Base Bid</b>				<b>\$2,779,360.00</b>	

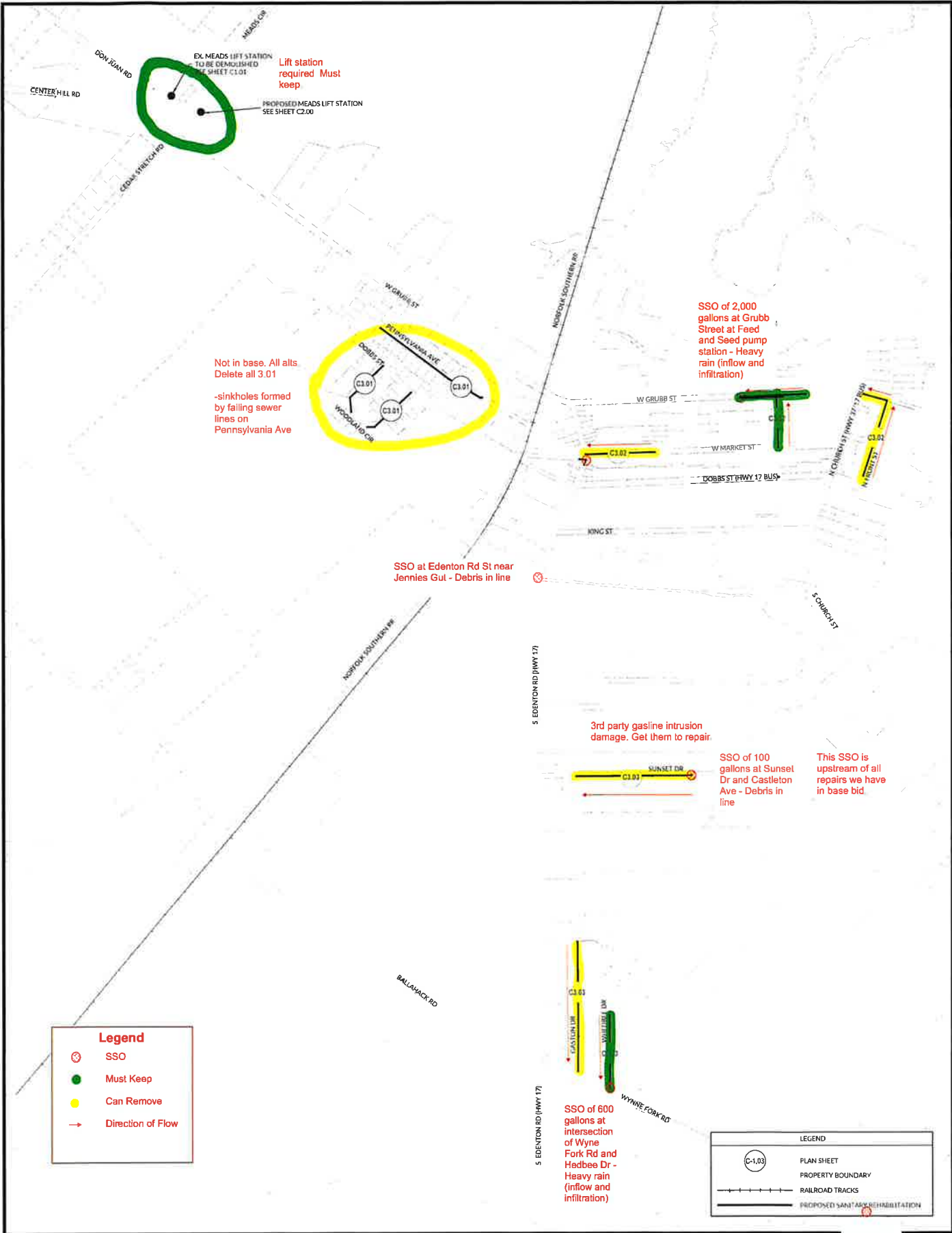


<b>Bid Tabulation - Alternate A</b>					
<b>Town of Hertford Collection System Improvements- Meads Lift Station Replacement and Sewer Rehabilitation</b>					
DWI Project No. VUR-W-ARP-0068 & CS370526-05					
WR Project No. 09220405.01					
<b>Bid Received: December 4, 2024</b>				<b>Enviro-Tech Unlimited Construction Services, LLC</b>	
Line	Item Description	Quantity	U/M	Unit Cost (\$)	Extended Price (\$)
<b>Sewer Rehabilitation- Dig &amp; Replace Alternate A</b>					
23	Assessment of Existing 8-Inch Sewers by CCTV Inspection and Manhole Inspections (low traffic)	300	LF	\$16	\$4,800
24	Assessment of Existing 8-Inch Sewers by CCTV Inspection and Manhole Inspections (high traffic)	298	LF	\$20	\$5,960
28	8-inch Sanitary Sewer Gravity Line Remove and Replace with DIP (Open Cut) (low traffic)				
	0-4' Depth	750	LF	\$195	\$146,250
	4-6' Depth	135	LF	\$225	\$30,375
29	8-inch Sanitary Sewer Gravity Line Remove and Replace with DIP (Open Cut) (high traffic)				
	0-4' Depth	76	LF	\$215	\$16,340
	4-6' Depth	100	LF	\$255	\$25,500
30	8-inch Sanitary Sewer Gravity Line Remove and Replace with PVC C900 (Open Cut) (low traffic)				
	4-6' Depth	125	LF	\$160	\$20,000
	6-8' Depth	275	LF	\$180	\$49,500
	8-10' Depth	123	LF	\$214	\$26,322
31	8-inch Sanitary Sewer Gravity Line Remove and Replace with PVC C900 (Open Cut) (high traffic)				
	8-10' Depth	75	LF	\$245	\$18,375
32	10-inch Sanitary Sewer Gravity Line Remove and Replace with PVC C900 (Open Cut) (low traffic)				
	8-10' Depth	248	LF	\$265	\$65,720
33	10-inch Sanitary Sewer Gravity Line Remove and Replace with PVC C900 (Open Cut) (high traffic)				
	8-10' Depth	50	LF	\$295	\$14,750
35	Excavate And Backfill For Obstructions And Point Repairs For 8-inch Sewer Line Rehabilitation (high traffic)	3	EA	\$13,500	\$40,500

38	Furnish And Install Cementitious Manhole Surface Liner 4-Foot Diameter (low traffic)	13	VF	\$1,000	\$13,000
40	Rebuild / Repair Bench And Invert Inside Designated Manholes (low or high traffic)	8	EA	\$3,500	\$28,000
47	Inspection of 4-Inch Sewer Lateral To Meet All Specified Requirements (low and high traffic)	52	EA	\$1,500	\$78,000
48	Inspection of 6-Inch Sewer Lateral To Meet All Specified Requirements (low and high traffic)	2	EA	\$1,500	\$3,000
49	Reconnect 4-Inch Sewer Lateral To Main to Meet All Specified Requirements (low traffic)	37	EA	\$4,000	\$148,000
50	Reconnect 4-Inch Sewer Lateral To Main to Meet All Specified Requirements (high traffic)	15	EA	\$5,000	\$75,000
53	Rehabilitate or Replace 4-Inch Sewer Lateral To Meet All Specified Requirements (low traffic)	1,295	LF	\$55	\$71,225
54	Rehabilitate or Replace 4-Inch Sewer Lateral To Meet All Specified Requirements (high traffic)	525	LF	\$65	\$34,125
57	Install 4-inch Sewer Lateral into Manhole	13	EA	\$4,250	\$55,250
59	Install Saddle for 4-inch Sewer Lateral	52	EA	\$2,250	\$117,000
60	Install Saddle for 6-inch Sewer Lateral	2	EA	\$3,000	\$6,000
61	Furnish And Install 4-Inch Clean Out	65	EA	\$1,800	\$117,000
62	Furnish And Install 6-Inch Clean Out	2	EA	\$3,900	\$7,800
63	Remove and Replace Roadway Pavement for Sewer Line Rehabilitation (low traffic)	2,173	SY	\$155	\$336,815
64	Remove and Replace Roadway Pavement for Sewer Line Rehabilitation (high traffic)	431	SY	\$300	\$129,300
65	Remove and Replace Concrete Sidewalks and Driveways	700	SY	\$165	\$115,500
66	Remove and Replace Concrete Curb & Gutter	335	LF	\$110.00	\$36,850
68	Trench Stabilization And Pipe Bedding	67	TN	\$105	\$7,035
69	Surface Restoration	744	SY	\$60	\$44,640
<b>Total Construction Bid Cost</b>				<b>\$1,887,932.00</b>	

<b>Bid Tabulation - Alternate B</b>					
<b>Town of Hertford Collection System Improvements- Meads Lift Station Replacement and Sewer Rehabilitation</b>					
DWI Project No. VUR-W-ARP-0068 & CS370526-05					
WR Project No. 09220405.01					
Bid Received: December 4, 2024				Enviro-Tech Unlimited Construction Services, LLC	
Line	Item Description	Quantity	U/M	Unit Cost (\$)	Extended Price (\$)
<b>Sewer Rehabilitation- CIPP Alternate B</b>					
25B	Rehabilitate Existing 8-Inch Sewers By Furnishing And Installing Finished Cured-in-Place Pipe Liner (low traffic)	578	LF	\$75	\$43,350
26B	Rehabilitate Existing 8-Inch Sewers By Furnishing And Installing Finished Cured-in-Place Pipe Liner (high traffic)	298	LF	\$87	\$25,926
27B	Rehabilitate Existing 10-Inch Sewers By Furnishing And Installing Finished Cured-in-Place Pipe Liner (high traffic)	298	LF	\$96	\$28,608
34B	Excavate And Backfill For Obstructions And Point Repairs For 8-inch Sewer Line Rehabilitation (low traffic)	5	EA	\$12,000	\$60,000
63B	Remove and Replace Roadway Pavement for Sewer Line Rehabilitation (low traffic)	142	SY	\$185	\$26,270
64B	Remove and Replace Roadway Pavement for Sewer Line Rehabilitation (high traffic)	0	SY	\$325	\$0
<b>Total Construction Bid Cost</b>				<b>\$184,154.00</b>	

<b>Bid Tabulation - Alternate C</b>					
<b>Town of Hertford Collection System Improvements- Meads Lift Station Replacement and Sewer Rehabilitation</b>					
DWI Project No. VUR-W-ARP-0068 & CS370526-05					
WR Project No. 09220405.01					
Bid Received: December 4, 2024				Enviro-Tech Unlimited Construction Services, LLC	
Line	Item Description	Quantity	U/M	Unit Cost (\$)	Extended Price (\$)
<b>Sewer Rehabilitation- Pennsylvania Ave Alternate C</b>					
23C	Assessment of Existing 8-Inch Sewers by CCTV Inspection and Manhole Inspections (low traffic)	300	LF	\$20	\$6,000
34C	Excavate And Backfill For Obstructions And Point Repairs For 8-inch Sewer Line Rehabilitation (low traffic)	2	EA	\$12,000	\$24,000
38C	Furnish And Install Cementitious Manhole Surface Liner 4-Foot Diameter (low traffic)	5	VF	\$1,350	\$6,750
40C	Rebuild / Repair Bench And Invert Inside Designated Manholes (low or high traffic)	2	EA	\$3,500	\$7,000
45C	Installation of 4' Diameter Manhole				
	6-8' Depth	1	EA	\$12,500	\$12,500
46C	Abandon in Place Existing 8" Gravity Sewer	300	LF	\$50	\$15,000
47C	Inspection of 4-Inch Sewer Lateral To Meet All Specified Requirements (low and high traffic)	4	EA	\$1,500	\$6,000
49C	Reconnect 4-Inch Sewer Lateral To Main to Meet All Specified Requirements (low traffic)	4	EA	\$2,500	\$10,000
53C	Rehabilitate or Replace 4-Inch Sewer Lateral To Meet All Specified Requirements (low traffic)	140	LF	\$65	\$9,100
59C	Install Saddle for 4-inch Sewer Lateral	4	EA	\$2,500	\$10,000
61C	Furnish And Install 4-Inch Clean Out	4	EA	\$2,000	\$8,000
63C	Remove and Replace Roadway Pavement for Sewer Line Rehabilitation (low traffic)	33	SY	\$225	\$7,425
65C	Remove and Replace Concrete Sidewalks and Driveways	4	SY	\$400	\$1,600
66C	Remove and Replace Concrete Curb & Gutter	20	LF	\$175.00	\$3,500
68C	Trench Stabilization And Pipe Bedding	4	TN	\$180	\$720
69C	Surface Restoration	44	SY	\$125	\$5,500
<b>Total Construction Bid Cost</b>				<b>\$133,095.00</b>	



**SHEET INDEX**  
SCALE: 1"=500'





# Gravity Sewer Projects SRF Application Hertford, NC



**WithersRavenel**

Engineers | Planners | Surveyors

Our People. Your Success

1157 Mackman Dr. Cary, NC 27513

© 2019 WithersRavenel

www.withersravenel.com

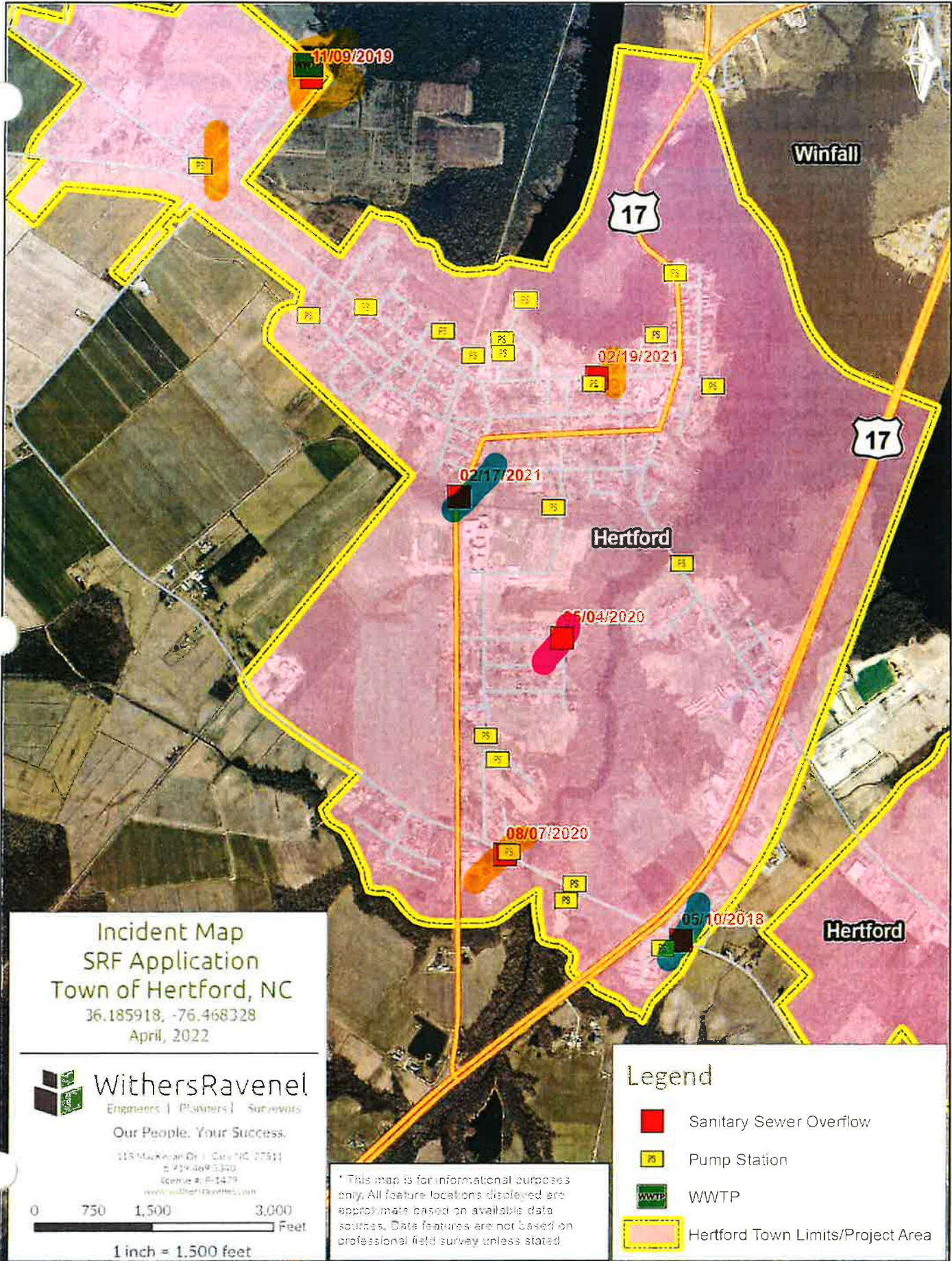
0 600 1,200 2,400 Feet

1 inch = 1,200 feet

\* This map is for informational purposes only. All feature locations displayed are approximate based on available data sources. Data features are not based on professional field survey unless stated otherwise.

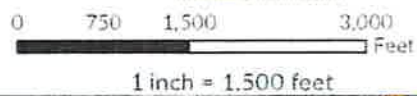
### Legend

-  SRF\_Sewer
-  Gravity Main
-  Force Main
-  Meads Pump Station
-  WWTP
-  address\_points
-  Hertford Municipal Limit



Incident Map  
 SRF Application  
 Town of Hertford, NC  
 36.185918, -76.468328  
 April, 2022

**WithersRavenel**  
 Engineers | Planners | Surveyors  
 Our People. Your Success.  
 115 McKnight Dr | Cary, NC 27511  
 P: 919.469.5330  
 F: 919.469.5330  
 www.withersravenel.com



\* This map is for informational purposes only. All feature locations displayed are approximate based on available data sources. Data features are not based on professional field survey unless stated.

**Legend**

- Sanitary Sewer Overflow
- PS Pump Station
- WWTP WWTP
- Hertford Town Limits/Project Area

## BID BOND

Any singular reference to Bidder, Surety, Owner, or other party shall be considered plural where applicable.

---

**BIDDER** (*Name and Address*): **Enviro-Tech Unlimited Construction Services, LLC**  
**PO Box 157**  
**Nags Head, NC 27959**

**SURETY** (*Name, and Address of Principal Place of Business*): **Old Republic Surety Company**  
**18500 W Corporate Dr, Ste 170**  
**Brookfield, WI 53045**

**OWNER** (*Name and Address*):

Town of Hertford  
114 West Grubb Street  
Hertford, NC 27944

**BID**

Bid Due Date: **October 17th, 2024**

Description (*Project Name— Include Location*): **Collection System Improvements- Meads Lift Station  
Replacement and Sewer Rehabilitation (VUR-W-ARP-0068 & CS370526-05)**

The base bid for this project will consist of the replacement/abandonment of Meads Lift Station including a generator, automatic-transfer switch, (2) 10 HP pumps with a pumping capacity of 200 GPM at 32 TDH, the installation of approximately 137 LF of 10-inch PVC gravity sewer line, 43 LF of 10-inch DIP gravity sewer line, 364 LF bore and jack of 20-inch steel casing with 10-inch DIP carrier pipe, installation of 3 new manholes, and 49 LF of 6-inch DIP force main. The base bid for the sewer rehabilitation portion of the project will consist of replacement of 628 LF of 8-inch gravity sewer line with PVC C-900, four point repairs, and rehabilitation of approximately 14 manholes. This rehabilitation will include the replacement and reconnection of approximately 10 sewer lateral connections and 350 LF of sewer laterals. Alternate 'A' encompasses roughly 600 LF of 8-inch CCTV assessment, 1061 LF of 8-inch pipe to be removed and replaced with lined DIP, 598 LF of 8-inch pipe to be removed and replaced with PVC C-900, 298 LF of 10 inch pipe to be removed and replaced with PVC C-900, three point repairs, and rehabilitation of approximately 10 manholes. Alternate 'A' includes the replacement and reconnection of approximately 54 sewer lateral connections and 1820 LF of sewer laterals. Alternate 'B' encompasses roughly 876 LF of 8-inch Cured-In-Place Pipe Lining, 298 LF of 10-inch Cured-In-Place Pipe Lining, and five point repairs. Please note that Alternate 'B' reflects the use of CIPP instead of the dig and replace method for one sewer line in the base bid and 3 sewer lines in Alternate 'A' in order to maximize the use of project funds. Alternate 'C' encompasses approximately 300 LF of 8-inch CCTV assessment, two point repairs, and the rehabilitation of approximately 2 manholes. Alternate 'C' includes the reconnection and replacement of 4 sewer lateral connections and 140 LF of sewer laterals.

**BOND**

Bond Number: **Issued Upon Award**

Date: **October 17th, 2024**

Penal sum	<b>Five Percent of Amount Bid</b>	\$	<b>5% of Bid</b>
	(Words)		(Figures)

Surety and Bidder, intending to be legally bound hereby, subject to the terms set forth below, do each cause this Bid Bond to be duly executed by an authorized officer, agent, or representative.

**BIDDER**

**Enviro-Tech Unlimited Construction Services, LLC**

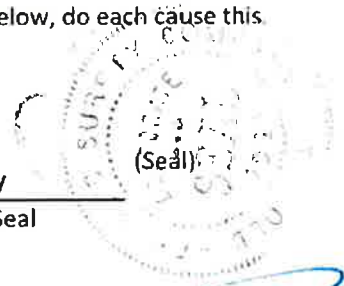
Bidder's Name and Corporate Seal

(Seal)

**SURETY**

**Old Republic Surety Company**

Surety's Name and Corporate Seal



By:

*[Handwritten Signature]*

Signature

By:

*[Handwritten Signature]*

Signature (Attach Power of Attorney)

**Nicholas Brown**

Print Name

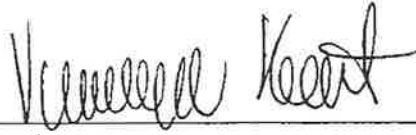
**Grey Allen Glover, Jr.**

Print Name

**Manager**

Title

Attest:



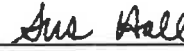
Signature **Veronica Kent**

Title **Finance Director**

**Attorney-in-Fact**

Title

Attest:



Signature **Susan Hall**

Title **Executive Assistant**

*Note: Addresses are to be used for giving any required notice.*

*Provide execution by any additional parties, such as joint venturers, if necessary.*

1. Bidder and Surety, jointly and severally, bind themselves, their heirs, executors, administrators, successors, and assigns to pay to Owner upon default of Bidder the penal sum set forth on the face of this Bond. Payment of the penal sum is the extent of Bidder's and Surety's liability. Recovery of such penal sum under the terms of this Bond shall be Owner's sole and exclusive remedy upon default of Bidder.
2. Default of Bidder shall occur upon the failure of Bidder to deliver within the time required by the Bidding Documents (or any extension thereof agreed to in writing by Owner) the executed Agreement required by the Bidding Documents and any performance and payment bonds required by the Bidding Documents.
3. This obligation shall be null and void if:
  - 3.1 Owner accepts Bidder's Bid and Bidder delivers within the time required by the Bidding Documents (or any extension thereof agreed to in writing by Owner) the executed Agreement required by the Bidding Documents and any performance and payment bonds required by the Bidding Documents, or
  - 3.2 All Bids are rejected by Owner, or
  - 3.3 Owner fails to issue a Notice of Award to Bidder within the time specified in the Bidding Documents (or any extension thereof agreed to in writing by Bidder and, if applicable, consented to by Surety when required by Paragraph 5 hereof).
4. Payment under this Bond will be due and payable upon default of Bidder and within 30 calendar days after receipt by Bidder and Surety of written notice of default from Owner, which notice will be given with reasonable promptness, identifying this Bond and the Project and including a statement of the amount due.
5. Surety waives notice of any and all defenses based on or arising out of any time extension to issue Notice of Award agreed to in writing by Owner and Bidder, provided that the total time for issuing Notice of Award including extensions shall not in the aggregate exceed 120 days from the Bid due date without Surety's written consent.
6. No suit or action shall be commenced under this Bond prior to 30 calendar days after the notice of default required in Paragraph 4 above is received by Bidder and Surety and in no case later than one year after the Bid due date.

7. Any suit or action under this Bond shall be commenced only in a court of competent jurisdiction located in the state in which the Project is located.
8. Notices required hereunder shall be in writing and sent to Bidder and Surety at their respective addresses shown on the face of this Bond. Such notices may be sent by personal delivery, commercial courier, or by United States Registered or Certified Mail, return receipt requested, postage pre-paid, and shall be deemed to be effective upon receipt by the party concerned.
9. Surety shall cause to be attached to this Bond a current and effective Power of Attorney evidencing the authority of the officer, agent, or representative who executed this Bond on behalf of Surety to execute, seal, and deliver such Bond and bind the Surety thereby.
10. This Bond is intended to conform to all applicable statutory requirements. Any applicable requirement of any applicable statute that has been omitted from this Bond shall be deemed to be included herein as if set forth at length. If any provision of this Bond conflicts with any applicable statute, then the provision of said statute shall govern and the remainder of this Bond that is not in conflict therewith shall continue in full force and effect.
11. The term "Bid" as used herein includes a Bid, offer, or proposal as applicable.